

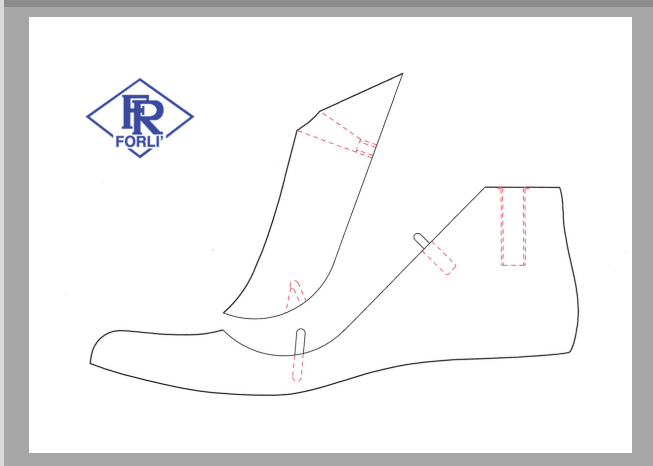
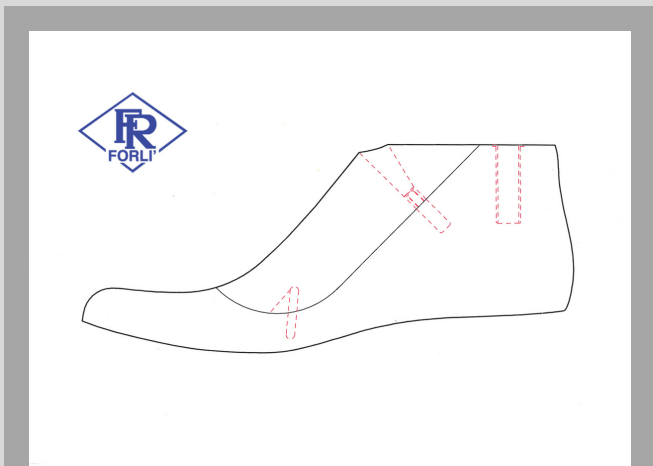


Formificio 
Romagnolo S.p.A.



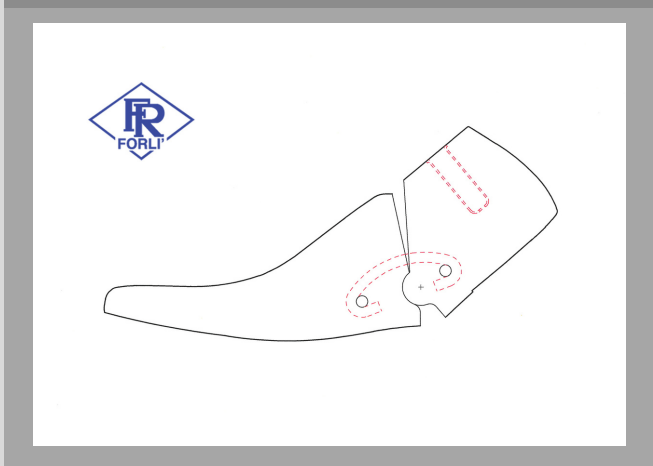
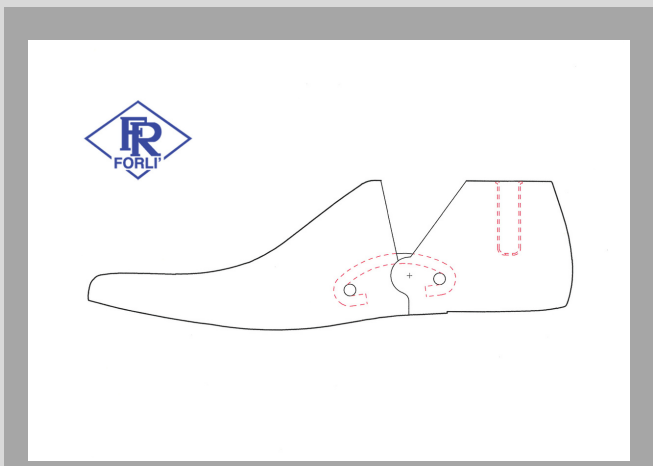
Cuneo / Molla

Wedge / Spring



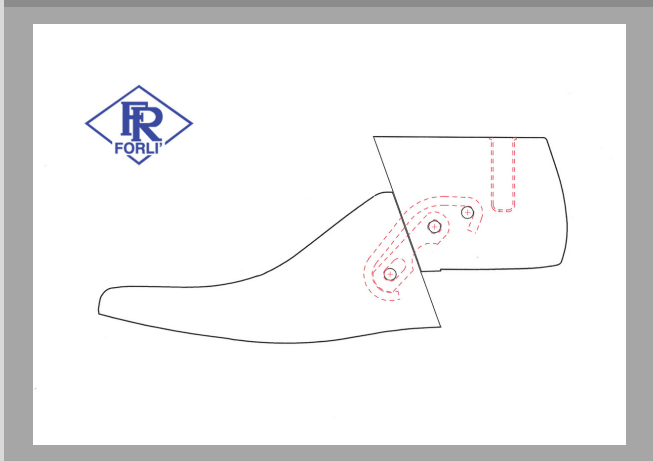
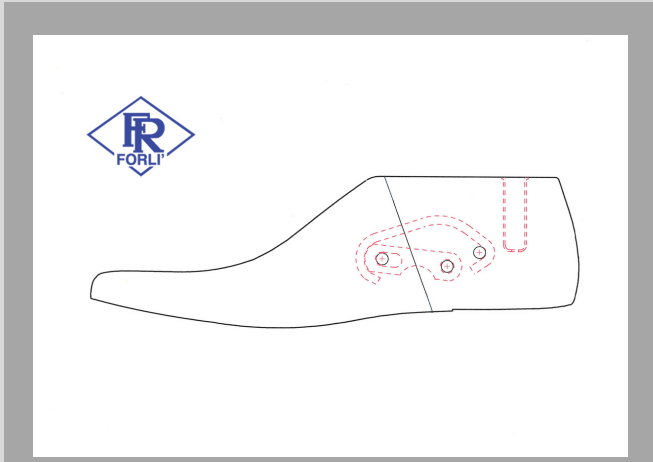
Snodo a V

V-joint



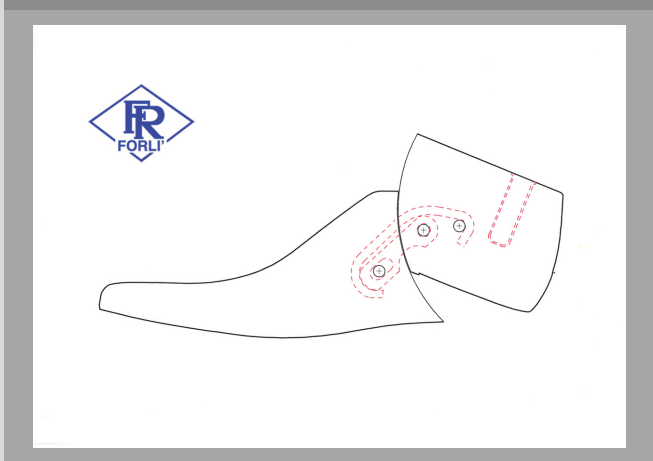
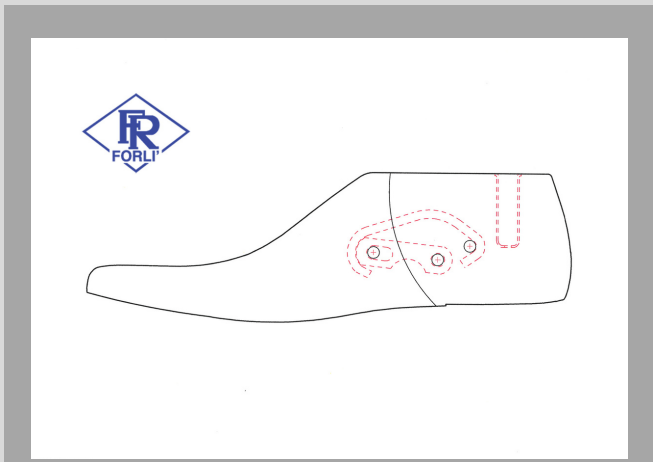
Snodo Arts

Hinged Arts

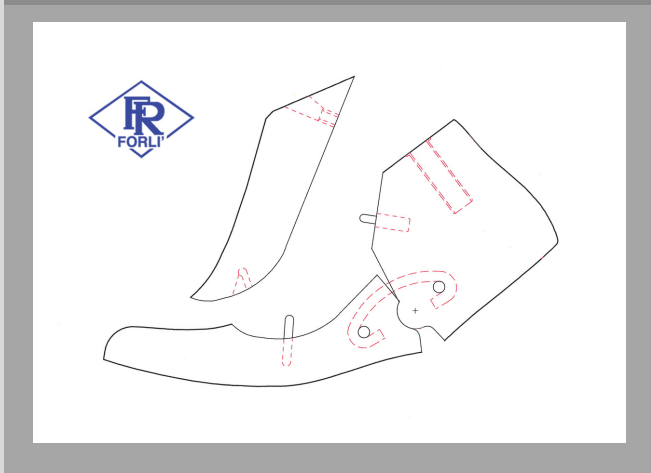
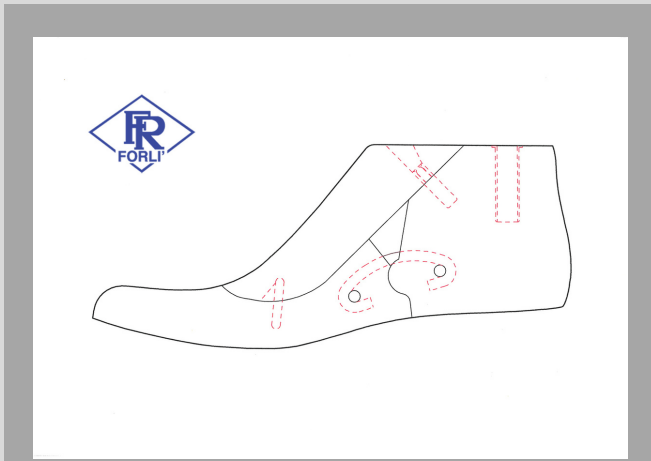


Snodo Lampo

Sliding Hinge



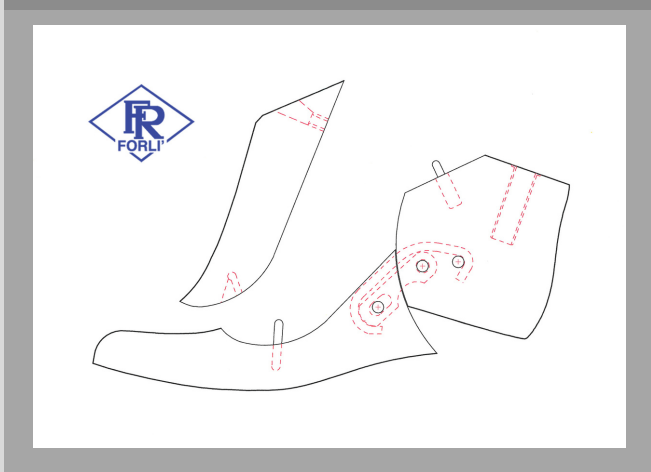
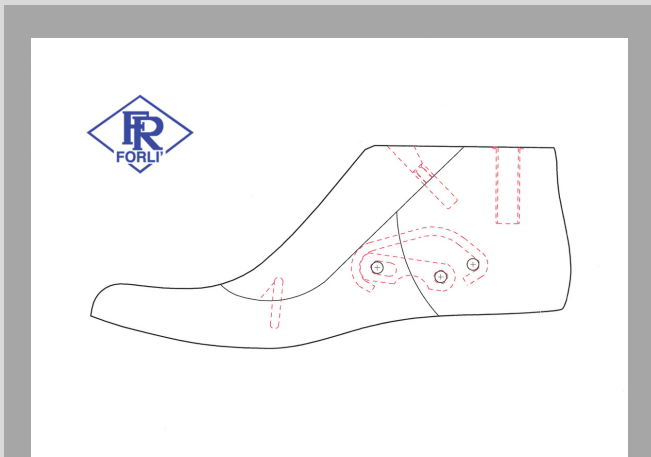
Snodo a V + Cuneo / Molla



V-Hinge + Quoin with Spring



Snodo Lampo + Cuneo / Molla



Sliding Hinge + Quoin with Spring



Cuneo / Molla verticale



Wedge / Vertical spring



Forma per scarpa d'arrampicata
Last for climbing shoe



Forma per scarpetta da punta
Last for pointe shoe



Forme "Cinque dita"



"Five fingers" lasts



Forma marcata con SDMARK



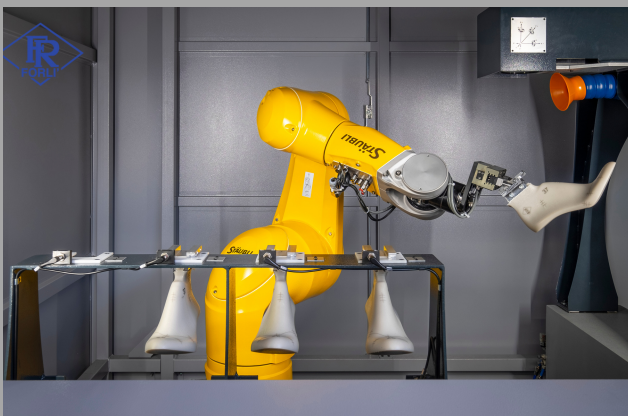
SDMARK
è il sistema
robotizzato per la
marcatura laser di
forme per calzatura:
ultima frontiera
dell'innovazione
nell'ambito del
processo produttivo
del settore
calzaturiero.

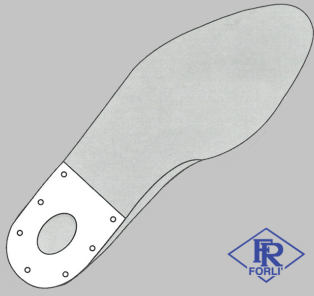
Shoe last marked with SDMARK



SDMARK
is the robotic
system for laser
marking of shoe
lasts: the last
frontier of
innovation in the
production process
of the footwear
sector.

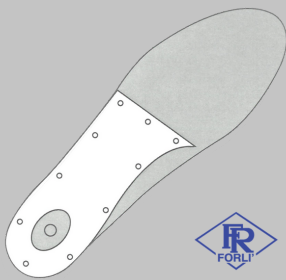
SDMARK (Newlast Group)





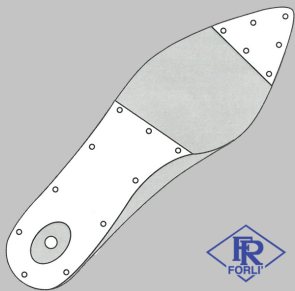
Tacco ferrato

Heel plated



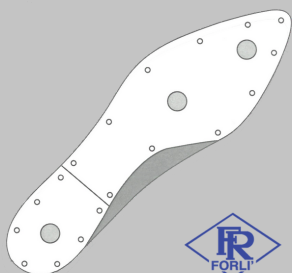
Mezza ferratura

Shank plated



Mezza ferratura + Punta ferrata

Shank plated + Toe Plated



Ferratura intera

Fully plated shoe last



Formificio 
Romagnolo S.p.A.



www.formificioromagnolo.com



@formificioromagnolospa



@formificio_romagnolo



Formificio Romagnolo S.p.A.



Formificio Romagnolo



Formificio Romagnolo

